

As we are constantly endeavouring to improve the performance of our equipment.  
The company reserves the right to make alteration from time to time and equipment differ from that detailed in this brochure.



WORK HARD FOR THE FLUID TREATMENT INDUSTRY

## SHANGHAI LIANCHENG (GROUP) CO., LTD.

Address: 3616--3618 Cao'an Road, Jiangqiao Shanghai  
P.C. 201812  
Switchboard: (021) 59138888  
Fax: (021) 59136782  
800 Free consultation Tel: 800-820-5009  
400 Free consultation Tel: 400-188-3339

- ✦ Pumps
- ✦ Valves
- ✦ Electric Panels
- ✦ Complete set of water supply equipment

# CORPORATION OUTLINE

Shanghai Liancheng (Group) Co., Ltd. is a well-known diversified major group enterprise that is dedicated to developing and manufacturing pumps, valves and fluid delivery systems, electrical control systems and environmental protection equipment in China.

After more than thirty years of development, the company now has five industrial parks distributed in economically developed areas such as Shanghai, Jiangsu and Zhejiang, covering a total area of 550,000 square meters, headquartered in Shanghai Fengbang Industrial Park. It has many wholly-owned subsidiaries and holding companies such as Shanghai Liancheng Pump Manufacturing Co., Ltd., Shanghai Liancheng Electric Motor Co., Ltd., Shanghai Liancheng Valve Co., Ltd., Shanghai Liancheng Group Logistics Co., Ltd., Shanghai Liancheng Group General Equipment Installation Engineering, Shanghai Amtek Industrial Equipment Co., Ltd., and Shanghai Liancheng Group Suzhou Co., Ltd., and the group has a total capital of 650 million yuan and total assets of more than 3 billion yuan. There are more than 3,000 product varieties, involving water pumps, motors, electrical cabinets, valves, complete sets of equipment, and mechanical accessories. With reasonable price, and reliable quality, its products are widely used in many fields such as municipal, water conservancy, construction, fire protection, electric power, environmental protection, petroleum, chemical, mining, and medicine. The Group has top sales performance in the industry every year.

Currently, the group company has more than 2,000 sets of advanced domestic and foreign production and testing equipment such as large-scale water pump test center, three-coordinate measuring instrument, dynamic and static balance measuring instrument, rapid laser molding instrument, multi-functional shot blasting machine, automatic argon arc welding machine, large vertical lathe, large grinding machine, and CNC machine tool cluster. There are more than 3,000 employees, 72.6% of whom are college graduates, including 475 with intermediate titles, 78 with senior titles, 19 national experts and 6 professors. A large amount of money is invested in technological innovation, product development and equipment introduction every year, holding up to 600 national patented technologies, and the company participates in the drafting and compilation of a large number of national and industry standards every year, involving dozens of products and technology standards in various fields such as water conservancy, chemical industry, fire protection, and urban water supply. The group has a perfect sales and service network including more than 30 branch companies and more than 200 branches, and has a professional sales service team of over 1800 people to provide our customers with professional technical support and excellent marketing services.

The group has passed ISO9001, ISO14001, and OHSAS18001 international management system certifications, comprehensively implements ERP information management, and has successively obtained the production and operation qualification certificates issued by the state and industry in important fields involving industry, fire protection, coal mine, and petrochemical industry, such as industrial product production license, CCC China national compulsory product certification certificate, CQC product certification certificate, CE certification certificate, health license, MA coal safety certification certificate, SMA measurement certification certificate, energy-saving certification certificate, water-saving certification certificate, international standard certification certificates, and import and export enterprise qualification, and has won many social honors such as Famous Trademark, "Shanghai Famous Brand Product", "China Famous Brand", "Large Enterprise", "The First National Water Pump Energy Saving Certification Enterprises", "National Water-saving Product Certification Enterprise", "Shanghai High-tech Enterprise", Shanghai "Municipal Enterprise Technology Center", "Shanghai Intellectual Property Demonstration Enterprise", "Shanghai Top 50 Private Manufacturing Industry", "Shanghai Top 100 Industrial Enterprises", "National Standard Drafting Unit", and "Top Ten National Brands of China's Water Industry".

With the sustainable operation of Liancheng Group, Liancheng products have been widely recognized by users, and currently there are a large number of domestic and foreign model projects such as National Stadium "Bird's Nest", National Centre for the Performing Arts, Shanghai World Expo Project, Capital Airport, Guangzhou Baiyun Airport, Shanghai Metro, Xi'an Metro, Shenyang Metro, Hong Kong Water Supply Engineering Shenzhen Shawan Pumping Station, Macao Water Supply Engineering



Zhuhai Pinggang Pumping Station, Yellow River Irrigation Shanxi Jiamakou Pumping Station, Shanxi Province Xifan Pumping Station, Guangdong Yun'an Liudu Pumping Station, Yellow River Xiaolangdi Water Conservancy Project, Ningxia Yanghuang Irrigation Project, Ordos Urban Drinking Water Project, Qinshan Nuclear Power, Lingao Nuclear Power, Guodian Group, Datang Power Plant, Huaneng Power Plant, Baosteel, Shougang, Tanggang, Taiyuan Steel, Angang, Xinjiang Bayi Iron and Steel, Daqing Oilfield, Qinghai Salt Lake Potash Project, Shanxi Coking, Lu'an Mining, Shaanxi Xianyang Chemical, CNOOC Huizhou Refining Project, Tsinghua University, Haier Group and Angola Agricultural Drainage and Irrigation Project, Myanmar National Agricultural Irrigation Project, as well as nuclear power, thermal power, hydropower, iron and steel, oil field, coking, mining, chemical industry, and oil refining. Liancheng Group's products are used in the projects of international well-known enterprises such as General Motors, Bayer, Siemens, Volkswagen, and Coca-Cola in China.

Liancheng Group is committed to building the world's top fluid treatment industrial enterprise, adhering to the purpose of cherishing the harmonious relationship between human and nature, and is dedicated to the development and manufacturing of environmentally friendly and energy-saving products to achieve the lofty goal of "Century Liancheng", and made unremitting efforts for the revitalization and development of national enterprises!

Water, delivering to a high and far place because of Liancheng...!

# CONTENTS

Air conditioner / cycle / Domestic pump	02
Industrial and mining pumps	06
Chemical pumps	10
Sewage Treatment	15
Municipal Water Conservancy, Irrigation, Drainage and Diversion of Water	20
Fire extinguishing pumps	22
Complete set of water supply equipment	26
Electric panels	30
Valves series	33
List of some sample projects	34



## Air conditioner / cycle / Domestic pump

- > SLS series vertical single-stage single-priming centrifugal pump
- > SLW series horizontal single-stage single-priming centrifugal pump
- > KTL, KTW series single-stage single-priming vertical and horizontal air conditioning circulating pumps
- > SLL series large vertical single-stage single-priming centrifugal pump
- > SLNC new single-stage centrifugal pump
- > IS single-stage single-priming centrifugal pump
- > GDL series vertical multistage piping centrifugal pumps
- > SLG series stainless steel vertical multistage pump

## SLS series vertical single-stage single-priming centrifugal pump

SLS

## Product Overview

- > With compact pump structure, small size and artistic shape.
- > Convenient installation. The inlet and outlet have the same bore located on the same center line; installed directly anywhere in the pipe line like valves.
- > The motor adopts low-noise bearing, and is equipped with a non-stop refueling device; the pump impeller has excellent dynamic and static balance performance, and they are rotating without vibration to improve the working environment.
- > The shaft seal adopts corrosion-resistant cemented carbide mechanical seal without any leakage.
- > Easy maintenance, with pipe removal not required.

## Technical Parameters

Q: 1.8~1400m<sup>3</sup>/h  
H: 9.2~156m  
t: -20°C~100°C  
p: ≤16bar



## SLW series horizontal single-stage single-priming centrifugal pump

SLW

## Product Overview

- > The pump features with compact structure, artistic shape, and small floor space, with 30% less floor space than ordinary horizontal pumps.
- > Smooth operation, low noise, high concentricity of components.
- > The shaft seal adopts corrosion-resistant cemented carbide mechanical seal without any leakage.
- > Easy maintenance, with pipe removal not required.

## Technical Parameters

Q: 2.8~1400m<sup>3</sup>/h  
H: 9.2~156m  
t: -20°C~100°C  
p: ≤16bar



## KTL, KTW series single-stage single-priming vertical, horizontal air conditioning circulating pump

KTL、KTW

## Product Overview

- > Directly connected to motor, the pump shaft is completely concentric with small and low noise;
- > With same inlet and outlet pores of the pump, realize stable and reliable operation;
- Product overview
- > SKF bearings with whole shaft and special construction configurations for reliable operation;
- > With unique installation structure, greatly reduce the floor area of pump and save 40%-60% of construction investment;
- > With perfect design, no leakage, and long life, saving 50%-70% of operation management costs; ;
- > With high-quality castings, high dimensional accuracy and Artistic appearance.

## Technical Parameters

Q: 50~1200m<sup>3</sup>/h  
H: 20~50m  
t: -10°C~80°C  
p: ≤17bar



## SLL series large vertical single-stage single-priming centrifugal pump

SLL

## Product Overview

- > By reference with the excellent hydraulic models at home and abroad, designed with advanced hydraulic design software, the pump has excellent hydraulic performance and high reliability and stability;
- > Pump adopts a vertical structure, axial suction, and horizontal discharge;
- > Pump unit has two installation methods: single foundation and double foundation, and the double-layer foundation installation can satisfy the needs of the installation height by equipping a transmission shaft;
- > Shaft seal is sealed by packing for easy installation and maintenance without external flushing water not required;
- > Rolling bearings are used, and lubricated with grease, designed to make the pump or motor bear axial force.
- > Seen from the motor end, the impeller rotates counterclockwise.

## Technical Parameters

Q: 2800~21600m<sup>3</sup>/h  
H: 17~70m  
t: ≤50°C  
P: ≤10bar



## SLNC new single-stage centrifugal pump

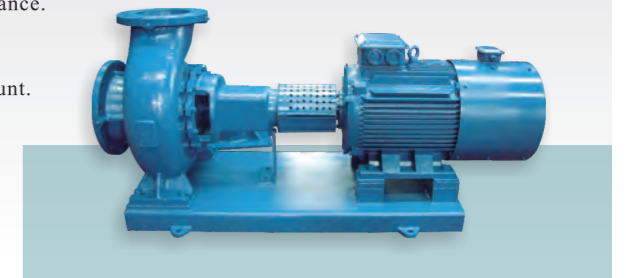
SLNC

## Product Overview

- > High-efficient and energy-saving hydraulic model is used for efficient and smooth operation.
- > Advanced structure, reliable sealing performance, convenient maintenance and long service life.
- > Easy operation and stable performance.
- > With rear door structure, it is advantaged with convenient maintenance and pipeline removal not required during maintenance.
- > Single-stage single-priming cantilever horizontal rear door structure, with convenient maintenance.
- > High-quality mechanical seal is used with small leakage amount.

## Technical Parameters

Q: 15~2000m<sup>3</sup>/h  
H: 10~140m  
t: 0°C~80°C  
P: ≤16 bar



## IS single-stage single-priming centrifugal pump

IS≥S

## Product Overview

- > High-efficient and energy-saving hydraulic model is used for efficient and smooth operation.
- > Advanced structure, reliable sealing performance, convenient maintenance and long service life.
- > Easy operation and stable performance.
- > With rear door structure, it is advantaged with convenient maintenance and pipeline removal not required during maintenance.

## Technical Parameters

Q: 6.3~400m<sup>3</sup>/s  
H: 5~125m  
t: -20°C~100°C  
P: ≤16 bar



## GDL series vertical multistage pipeline centrifugal pumps

GDL

## Product Overview

- > The vertical segmental plus stainless steel case structure are used making the inlet and outlet on the same horizontal line with the same bore, and the pump can be installed in the pipeline like a valve.
- > Small floor space, easy installation.
- > High efficiency and energy saving, smooth operation.
- > The shaft seal adopts wear-resistant mechanical seal without any leakage, with long service life.

## Technical Parameters

Q: 2~86m<sup>3</sup>/h  
H: 25~180m  
t: 0°C~80°C  
p: ≤25 bar



## SLG series stainless steel vertical multistage pump

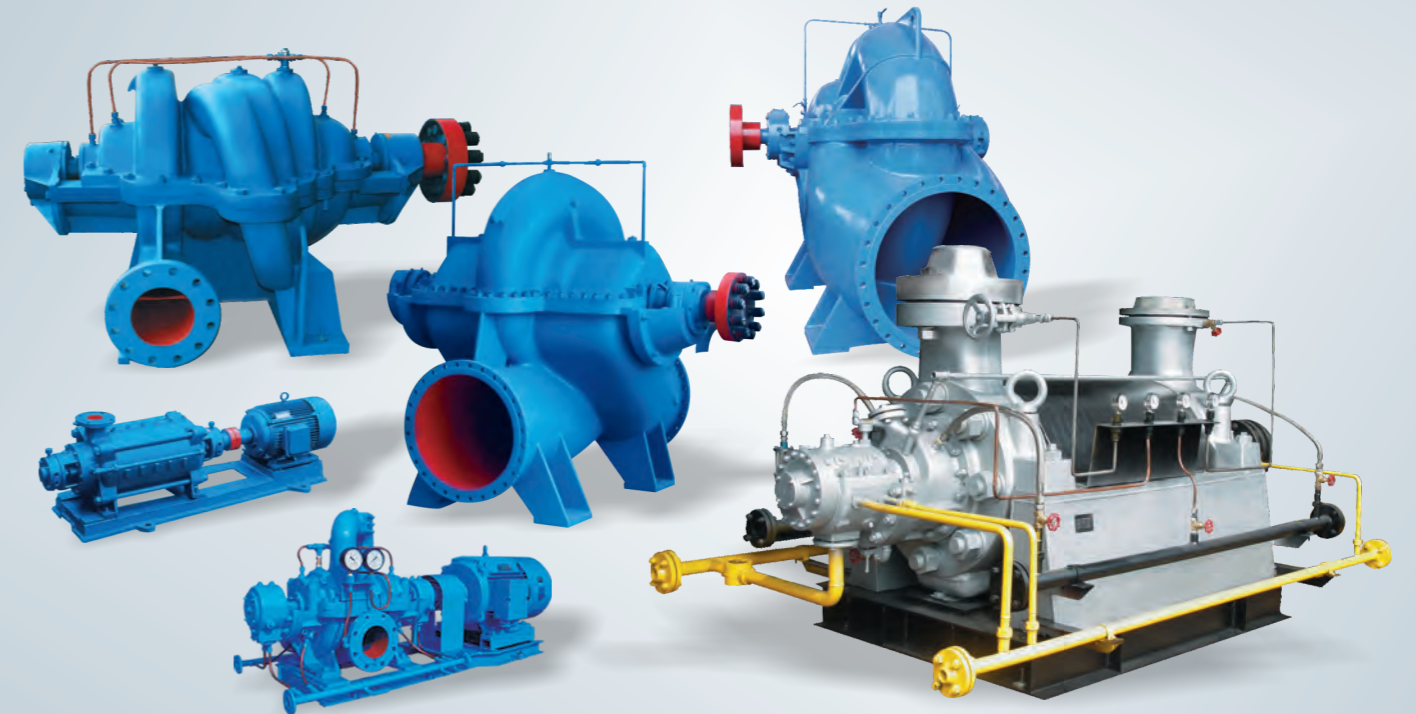
SLG

## Product Overview

- > The "3D simulated flow field analysis" technology is used in design. The impeller, guide vane, and middle section are all made with stainless steel in the punching process, and welded by plasma or laser. Compared with ordinary cast stainless steel pumps, the efficiency is increased by 5-7%.
- > The inlet and outlet flanges of the pump body are movable replaceable flanges to meet the needs of different pipeline pressures.
- > High-precision cartridge mechanical seal is used, and can be installed and removed freely, and its service life can reach more than 10,000 hours.
- > Compared with cast pumps, the pump weight is reduced by 20%, with small size, less floor space, and saved investment.

## Technical Parameters

Q: 0.8~120m<sup>3</sup>/h  
H: 5.6~330m  
t: -15°C~120°C  
p: ≤40 bar



## Industrial and mining pumps

- > SLO (W) series middle open volute type single-stage double suction centrifugal pump
- > SLOWN series of high-efficient double suction centrifugal pumps
- > SLOW two-stage double-suction middle open volute centrifugal pump
- > SLOW double inlet multistage middle open centrifugal pump
- > DG series multistage boiler water feed pump
- > SLD series horizontal multistage centrifugal pumps
- > SLDP series self-balance multistage centrifugal pumps
- > MD wear-resistant single-priming multistage mining centrifugal pump
- > N type condensation pump

### SLO(W) series split-case volute type single-stage double-priming centrifugal pump

SLO(W)

**Product Overview**

- > Compact structure, artistic shape, good stability and easy installation.
- > With smooth operation, the optimized design of the double priming impeller reduces axial forces to a minimum; the impeller is a precision cast product with excellent hydraulic properties. The inner surface of the pump casing and the impeller surface are extremely smooth with significant cavitation resistance and high efficiency higher by 2%-5% than S type.
- > When the medium temperature is 80C~130C, the product can be specially customized according to the site situation.

**Technical Parameters**

Q: 80~9000m<sup>3</sup>/h  
H: 22~200m  
t: 0°C~80°C  
p: ≤25 bar



### SLOWN series of high-efficient double suction centrifugal pumps

SLOWN

**Product Overview**

- > With horizontal middle open structure, the inlet and outlet are both located on the pump body, and the foot support type is adopted for convenient inspection and maintenance;
- > It is composed of two single-priming impellers combined together in the back-to-back way, and some adopt the structure of adjacent blades staggered each other, and the water flow pulse drops to ±1%~±2% of the head, featuring more stable operation, more balanced water flow, high head, large flow, and good cavitation performance;
- > With compact axial structure, small bearing span, high shaft stiffness, the pump runs smoothly and reliably;
- > The theoretical value is zero in the axial direction, the radial force of the double volute structure is small, the adjacent blades are staggered with small pulse for smooth operation and high reliability;
- > By reference to the excellent hydraulic model, introduced with foreign advanced technology and combined with well-known domestic universities, the product is designed with multiple working conditions in parallel, featuring reliable performance, high efficiency and energy saving, stable operation, low noise, and low vibration;
- > Shaft seal has packing seal and mechanical seal structures.

**Technical Parameters**

Q: 65~25000m<sup>3</sup>/h  
H: 10~270m  
t: 0°C~80°C



Widely used in many liquid transportation applications such as waterworks, building water supply, air conditioning circulating water, water conservancy irrigation, drainage pumping stations, power stations, industrial water supply systems, fire protection systems, and shipbuilding industry.



### SLOW two-stage double-priming split-case volute centrifugal pump

SLOW

**Product Overview**

- > Satisfy the needs of large flow and high lift in power plants, pump stations and iron and steel plants.
- > Smooth operation and convenient maintenance.
- > The impeller adopts the first stage double priming and secondary stage single priming structure, improving the cavitation resistance of the pump and reducing the axial size of the pump.
- > All adopt mechanical seal without any leakage after 8000 hours; the packing seal can be customized according to customer requirements.
- > Rolling bearings are used with grease or thin oil lubrication for convenient maintenance of the bearings.

**Technical Parameters**

Q: 350~1250m<sup>3</sup>/h  
H: 97~240m  
t: 0°C~80°C



### SLOW double inlet multistage split-case centrifugal pump

SLOW

**Product Overview**

- > Satisfy the needs of large flow and high lift in power plants, pump stations and iron and steel plants.
- > Smooth operation and convenient maintenance.
- > The axial water thrust of the water pump is well balanced.
- > The sealing parts of the water pump are distributed on the low-pressure side, prolonging the service life of the sealing material and improving the corrosion resistance of the flow passage parts.
- > Combined with the domestic and foreign advanced multi-stage split-case pump design experience.
- > Conveying medium: Water or granules containing liquid.

**Technical Parameters**

Q: 288~14400m<sup>3</sup>/h  
H: 150~280m  
t: 0°C~80°C



### DG series multistage boiler water feed pump

DG

**Product Overview**

- > Combined with foreign advanced technology, it ensures the superiority of the pump.
- > With high efficiency and good cavitation performance.
- > Low vibration, low noise, and smooth operation.

**Technical Parameters**

Q: 3.75~300m<sup>3</sup>/h  
H: 75~1920m  
t: 0°C~170°C



### SLD series horizontal multistage centrifugal pump

SLD

**Product Overview**

- > Pump suction port is located in the horizontal direction, and the outlet is located in the vertical upward direction.
- > There are replaceable shaft sleeves at both ends of the shaft to protect the shaft.
- > There are two kinds of bearing parts: rolling bearings and sliding bearings, and the shaft seal adopts packing seal.
- > The pump is driven directly by the motor through an elastic coupling.
- > Seen from the primary end, the pump rotates clockwise.

**Technical Parameters**

Q: 6.3~1100m<sup>3</sup>/h  
H: 22~1153m  
t: 0°C~80°C



## SLDP series self-balancing multistage centrifugal pump

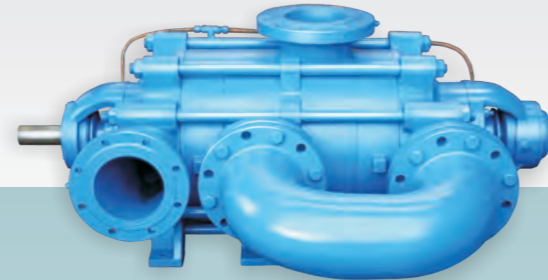
SLDP

## Product Overview

- > The axial force is automatically balanced by symmetrical arrangement of the impellers, with less wear parts required.
- > Good operation reliability, high efficiency and energy saving.
- > Simple operation, and convenient maintenance.

## Technical Parameters

Q: 200~500m<sup>3</sup>/h  
H: 80~660m  
t: 0°C~80°C



## MD type wear-resistant single-priming multi-stage mining centrifugal pump

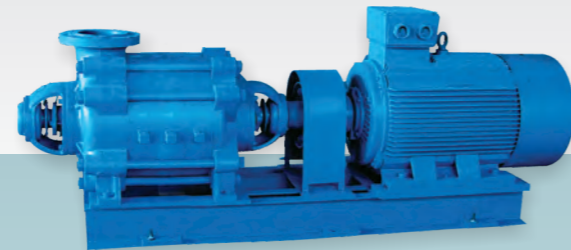
MD

## Product Overview

- > Made of special alloy wear-resistant cast iron for mine drainage.
- > High efficiency, and good cavitation performance.
- > Smooth and reliable operation.

## Technical Parameters

Q: 25~1100m<sup>3</sup>/h  
H: 90~1153m  
t: 0°C~80°C



## N-type condensate pump

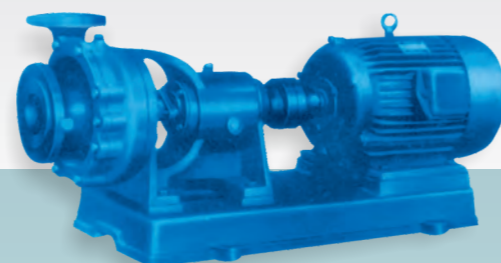
N

## Product Overview

- > Sealed with soft packing, and the shaft seal is equipped with a replaceable shaft sleeve.
- > The pump is driven by an electric motor through an elastic coupling.
- > With a high suction lift.

## Technical Parameters

Q: 8~120m<sup>3</sup>/h  
H: 38~152m  
t: 0°C~120°C



## Chemical Pumps

- > IH series single-stage chemical pump
- > IHF fluoroplastic chemical centrifugal pump
- > GY type grease trap lifting device
- > AY series centrifugal oil pump
- > AY type multistage centrifugal oil pump
- > CYZ series self-priming centrifugal oil pump
- > SLZA series chemical process pumps
- > SLCZ series standard chemical process pumps
- > CQ series magnetic drive pumps
- > 2BEN new water ring vacuum pump
- > AYG vertical line pump
- > LY series long shaft fluid lower pump
- > SLDA series axial section double suction pump
- > SLDC series level in the multistage pump
- > The SLDT (D) series multistage pump Radial section
- > The SLMC series horizontal multistage pump
- > The SLPP series is a single-stage centrifugal mixed-flow pump
- > The SLZA E / F series flow pump
- > TMC / TTMC, vertical cylinder pump
- > XL series small flow chemical flow pump

**IH series single-stage chemical pump**

IH

**Product Overview**

- > With compact structure, small size and light weight.
- > Easy operation, and stable performance.
- > Convenient maintenance, with pipeline removal not required during maintenance.

**Technical Parameters**

Q: 6.3~400m<sup>3</sup>/h  
 H: 5~125m  
 t: -20°C~105°C  
 P: ≤16 bar



**IHF Fluoroplastic Chemical Centrifugal Pump**

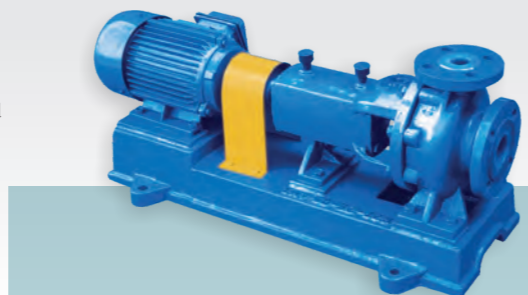
IHF

**Product Overview**

- > Corrosion resistant, wear resistant, high temperature resistant, non-aging, high mechanical strength.
- > Advanced structure, reliable sealing performance, convenient maintenance, and long service life.
- > Metal shell is used with perfluoroethylene propylene lining.
- > The impeller uses metal inserts formed by entirely sintering and pressing process and wrapped with fluoroplastic material.

**Technical Parameters**

Q: 6~240m<sup>3</sup>/h  
 H: 5~132m  
 t: -85°C~200°C  
 P: ≤16 bar



**GY Type Oil Separator Lifting Device**

GY

**Scope of application**

> This oil separator is widely used in many places such as large comprehensive shopping malls, office buildings, schools, military, various hotels, restaurants, senior guest houses, and commercial restaurants for oil separation and dirt removal of water drainage pipes in the kitchen. In addition, it is suitable for oil-contained waste water such as industrial coating wastewater.

**Product features**

- I. The equipment is wholly made of SUS304 material with artistic shape.
- II. Fully-closed design, no odor leakage, guaranteeing a good working environment.
- III. The automatic slag remover is made of 304 stainless steel, and the automatic reciprocating type is used to ensure not easily clogging; compared with the spiral type, the back wash pump is not required, and the water content in the slag is very small.
- IV. The efficient oil and water separation system is used to prevent the grease from solidification to form clumps, greatly improving the oil and water separation effect. During daily operation, only oil collecting drum and slag drum are replaced with simple maintenance and operation.
- V. Automatic sewage lifting system is used with multi-point liquid level control. Dual pumps are provided for alternate operation and mutual backup. The high level dual pumps have over-limit alarm and anti-overflow device.
- VI. The intelligent control system is used for safer and more intelligent operation of equipment. Basic requirements for power supply: The inlet power supply uses three phase and five wire system, with rated voltage 380V, and its capacity supplied can ensure that all power devices work normally simultaneously.
- VII. Unique three-stage separation concept: solid and liquid separation at front end, oil and water separation at middle, and automatic sewage lifting at the end.
- VIII. Long service life: This equipment is made of stainless steel, and main body is made of high quality SUS304 stainless steel to prevent rust forever and to provide strong corrosion resistance and durable operation.



**AY Series Centrifugal Oil Pump**

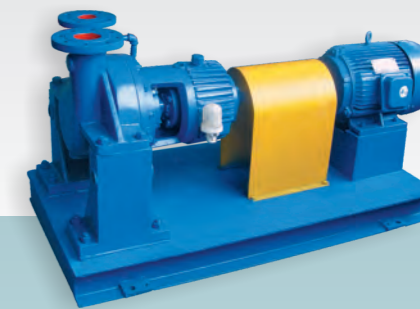
AY

**Product Overview**

- > Advanced foreign technology is introduced, new pump is newly designed.
- > The hydraulic part uses high efficient and energy saving hydraulic model to ensure the high efficiency during operation.
- > Accurate material is selected, and Class I and II materials are mostly used for main body.

**Technical Parameters**

Q: 6.3~600m<sup>3</sup>/h  
 H: 33~356m  
 t: -45°C~400°C  
 p: ≤4.0 MPa



**AY Type Multi-Stage Centrifugal Oil Pump**

AY

**Product Overview**

- > Hydraulic overflow part uses high efficient and energy saving hydraulic model for high efficiency.
- > High quality sliding bearings and ball thrust bearings are used with self-lubrication by thin oil through the oil slinger and are cooled with water.

**Technical Parameters**

Q: 6.25~180m<sup>3</sup>/h  
 H: 105~657m  
 t: 0°C~300°C



**CYZ Series Self-priming Centrifugal Oil Pump**

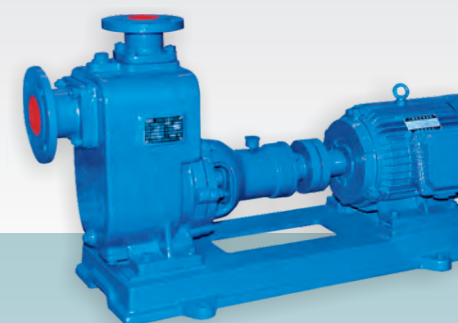
CYZ

**Product Overview**

- > Simple structure, and convenient operation.
- > Operation balance, easy maintenance.
- > High efficiency, strong self-priming capacity.
- > Pump is made of high quality material, and seals use carbide mechanical seal for durable operation.
- > No safety valve is required for outlet pipeline, and no bottom valve is required for suction pipeline, simplifying the pipeline system.

**Technical Parameters**

Q: 3.2~500m<sup>3</sup>/h  
 H: 12~80m  
 t: -20°C~80°C  
 p: ≤12bar





## SLZA Series Chemical Process Pumps

SLZA

**Product Overview**

- > Designed in accordance with API610 (version 8) standard, component assembly is used, and the coupling shaft is equipped with an extended segment.
- > Pump has dual volutes with large pipe bore and high corrosion allowance.
- > Mechanical seal or packing seal can be selected according to the different needs.
- > Wear parts can be replaced for quick and convenient maintenance.

**Technical Parameters**

Q: 5~2600m<sup>3</sup>/h  
 H: 14~300m  
 t: -80°C~450°C  
 p: ≤4.0MPa



## SLCZ Series Standard Chemical Process Pumps

SLCZ

**Product Overview**

- > Advanced foreign technology is introduced to guarantee the quality superiority.
- > The performance curve is flat with low cavitation value and high efficiency.
- > Performance range includes all performances of IHH series standard chemical pump.

**Technical Parameters**

Q: 5~3000m<sup>3</sup>/h  
 H: 14~160m  
 t: -80°C~450°C  
 p: ≤4.0MPa



## CQ Series Magnetically Driven Pump

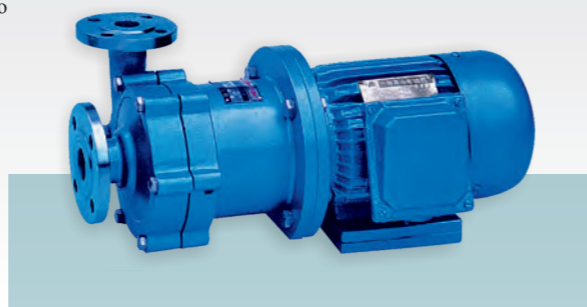
CQ

**Product Overview**

- > Artistic shape, small size, low noise, and reliable operation.
- > Stationary seal is used instead of movable seals, making the flowing part of pump is fully in the sealing state.
- > Material with corrosion resistance and high strength is used to ensure that the pump has good corrosion resistance.

**Technical Parameters**

Q: 1~51m<sup>3</sup>/h  
 H: 2~50m  
 t: -20°C~100°C  
 p: ≤16bar



## 2BEN New Water Ring Vacuum Pump

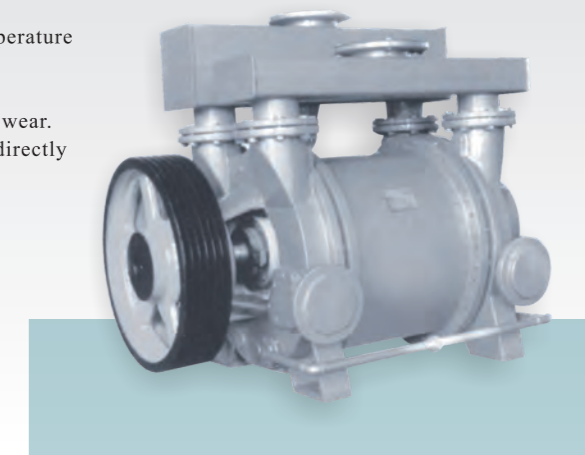
2BEN

**Product Overview**

- > Compact structure, high rotations of pump; generally, it can be directly connected to the motor.
- > Small structural size to obtain large discharge volume, with small floor space.
- > The compressed air is basically isothermal; that is, the temperature change during the gas compression process is very small.
- > As there is no metal friction surface in the pump cavity, the lubrication of the inside of the pump is not required with less wear.
- > Sealing between the rotating part and the fixed part can be directly realized by water seal without any other seals required.
- > Uniform gas suction, smooth and reliable running simple operation, and convenient inspection and maintenance.

**Technical Parameters**

Q: 96~26200m<sup>3</sup>/h  
 t: -10°C~40°C(gas)  
 0~35°C(liquid)  
 p: 33/160hPa~1013hPa



## AYG vertical line pump

AYG

**Product Overview**

- > Meet the standard requirements of API610 and GB3215-82, corrosion resistance and high temperature resistance
- > The impeller hydraulic design maximizes the cavitation performance of the pump
- > Lower NPSH value, the pump installation height is small, reduce the installation cost

**Technical Parameters**

Q: 3~600m<sup>3</sup>/h  
 H: 4~120m  
 t: -20°C~+150°C  
 p: ≤25bar



## LY series long shaft fluid lower pump

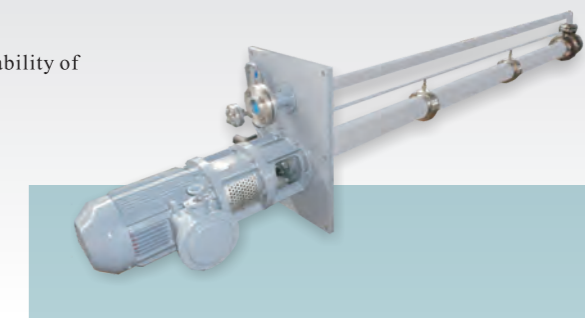
LY

**Product Overview**

- > Using the newly developed hydraulic model to improve the efficiency of the pump. Adopt a new and reliable shaft mode
- > Use the filler to seal and flush the line structure
- > Adopt new materials and new processes to improve the reliability of products and extend the maintenance cycle of pump

**Technical Parameters**

Q: 2~400m<sup>3</sup>/h  
 H: 7.5~200m  
 t: -20°C~+125°C  
 p: ≤16bar



## SLDA series axial section double suction pump

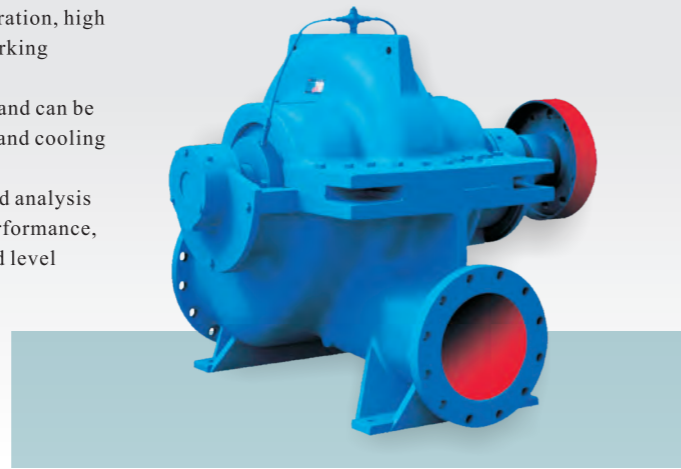
SLDA

## Product Overview

- > Convenient installation and maintenance, stable operation, high strength, long service life, can meet the more harsh working conditions
- > The sealing system is designed according to API682 and can be configured with various forms of sealing and flushing and cooling scheme
- > The hydraulic design adopts advanced CFD flow field analysis technology, with high efficiency, good evaporation performance, and energy saving can reach the international advanced level

## Technical Parameters

Q: 20~40000m<sup>3</sup>/h  
H: max 100m  
t: -20°C~+160°C  
p: ≤25bar



## SLDC series level in the multistage pump

SLDC

## Product Overview

- > Impeller Symmetric arrangement, automatic balance of axial force,, stable operation, high strength, long service life
- > The inlet and outlet are arranged in the lower shell, and the pump can be maintained without moving the inlet and outlet pipeline, with convenient installation and maintenance.

## Technical Parameters

Q: 10~1500m<sup>3</sup>/h  
H: max 2000m  
t: -40°C~+200°C  
p: ≤260bar



## The SLDT (D) series multistage pumpRadial section

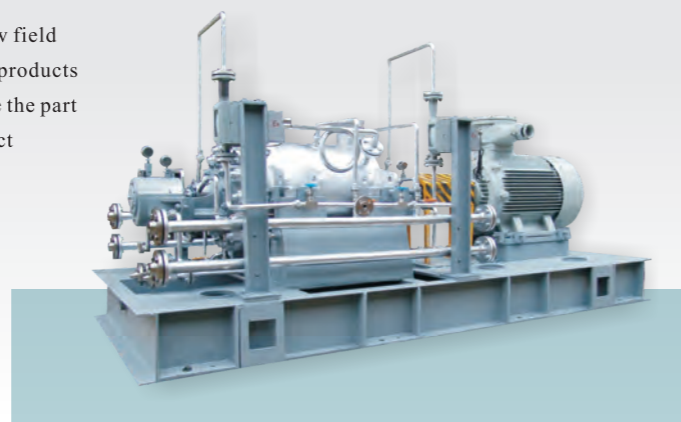
SLDT (D)

## Product Overview

- > Standard design as per API610
- > CFD simulation technology is used to conduct flow field analysis and optimize the hydraulic performance of products
- > Finite element analysis software is used to analyze the part strength to ensure the safety and reliability of product operation

## Technical Parameters

Q: 5~ 1000m<sup>3</sup>/h  
H: max 3000m  
t: -80°C~+450°C  
p: ≤350bar



## The SLMC series horizontal multistage pump

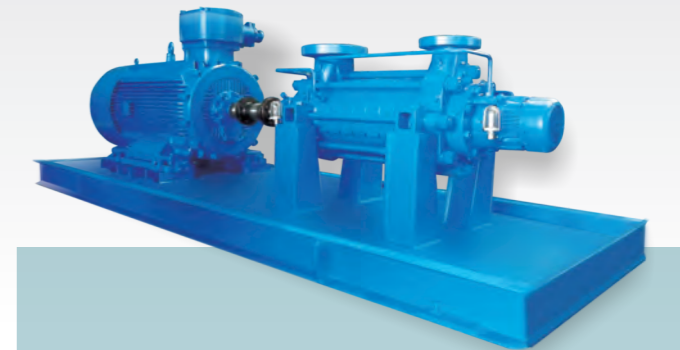
SLMC

## Product Overview

- > Balancing the drum-disc structure balances the axial force.
- > The centripetal thrust bearing and the radial bearing are combined to withstand the residual force.
- > Assembly of mechanical seal design.
- > Standard API610 seal flushing and cooling mode.
- > According to different medium temperature, choose different structure modes, bottom foot support type and central support type.
- > Flexible import and export layout, to meet the needs of different users
- > The efficient area is expanded by designing different hydraulic models to ensure the efficient operation under various working conditions.
- > The suction head impeller design improves the corrosion resistance of the pump.
- > Pay attention to the maintenance to ensure the owner's easy maintenance.

## Technical Parameters

Q: 5~ 1000m<sup>3</sup>/h  
H: max 1200m  
t: -80°C~+180°C  
p: ≤16bar



## The SLPP series is a single-stage centrifugal mixed-flow pump

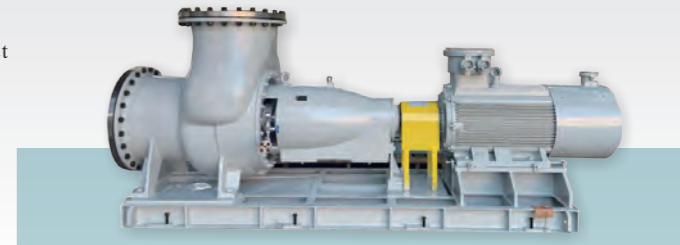
SLPP

## Product Overview

- > Design and manufacture according to GB13008 "Technical conditions of mixed flow pump and Axial flow pump", with wear resistance and corrosion resistance
- > The structure is safe and reliable, stable operation and convenient maintenance
- > Stable performance, high efficiency, large overcurrent area, thus reducing the blockage.
- > A complete vent device is conducive to the exhaust of the suction line.

## Technical Parameters

Q: 0~ 7000m<sup>3</sup>/h  
H: max 30m  
t: -20°C~ +180°C  
p: ≤ 16bar



## The SLZA E / F series flow pump

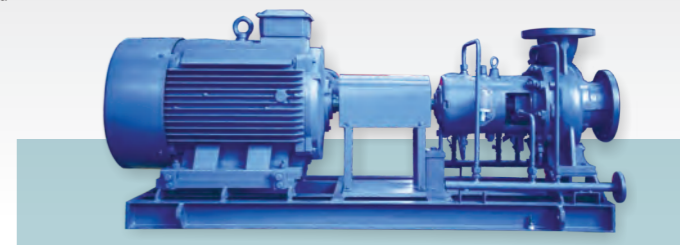
SLZA E / F

## Product Overview

- > According to ANSI / API610-200410th edition and GB / T3215-2007 national standards.
- > High degree of generalization, hydraulic parts and bearing parts are consistent
- > Series pump type can be equipped with thermal insulation jacket structure
- > The pump efficiency is high, and the corrosion margin between the pump body and the impeller is large
- > The shaft is protected by the shaft sleeve seal, completely isolated from the medium, to avoid the corrosion of the shaft, so that the overall life of the pump is improved
- > The motor uses extended segment diaphragm coupling, maintenance, can not remove the royal pipeline and motor, very convenient and fast.

## Technical Parameters

Q: 0~ 2600m<sup>3</sup>/h  
H: 0~ 300m  
t: -80°C~ +450°C  
p: ≤ 75bar



TMC / TTMC, vertical cylinder pump

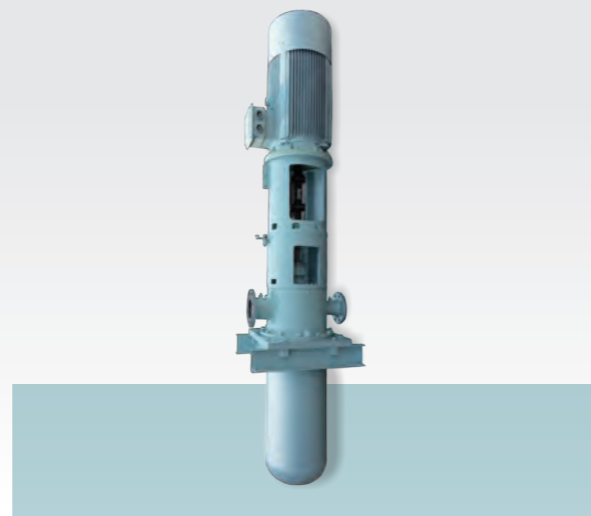
TMC / TTMC

**Product Overview**

- > The product is designed according to the ANSI / API 610-2004 10th Edition and GB / T3215-2007 national standards
- > Wear resistance, high temperature resistance, corrosion resistance

**Technical Parameters**

Q: 0~ 800m<sup>3</sup>/h  
 H: 0~ 800m  
 t: -80°C~+180°C  
 p: ≤ 100bar



XL series small flow chemical flow pump

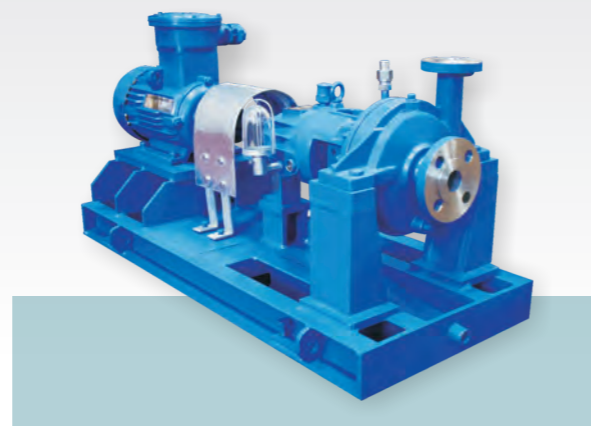
XL

**Product Overview**

- > The pump body is center-supported with axial suction and radial discharge
- > The impeller is a closed impeller. The axial force is mainly balanced by the balance hole, and the residual axial force is borne by the bearing.
- > The lubrication mode of the bearing is thin oil lubrication, and the oil level is controlled by the constant level oil cup to ensure that the bearing works in good lubrication state.
- > Only the pump body is a special part, the high degree of three changes, can reduce the operating cost.
- > The rear open door design can not move the pump inlet and exit pipeline, can be repaired, easy to use.

**Technical Parameters**

Q: 0~ 12.5m<sup>3</sup>/h  
 H: 0~ 125m  
 t: -80°C~+450°C  
 p: ≤ 25bar



Sewage Treatment

- > WQ series non-clogging sewage pump
- > WL series non-clogging vertical sewage pump
- > WQX series cutting type submersible sewage pump
- > ZW series self-priming non-clogging sewage pump
- > YW series submersible sewage pump
- > QGL(S) series (bidirectional) submersible crossflow system
- > WTG small sewage lifting device
- > SPS intelligent integrated prefabricated pumping station
- > Grille decontamination machine
- > QJB submersible mixer

## WQ series non-clogging sewage pump

WQ

## Product Overview

- > Imported SKF bearing or NTN bearing is used.
- > The built-in cooling system, whether the motor is located on or below the liquid level, enables the pump work normally.
- > German Burgmann mechanical seals are used, and two mechanical seals are connected in series independent of each other.
- > The oil is used to lubricate and cool the mechanical seals, and can prevent liquid from penetrating into the motor, providing additional safety function.
- > Depending on the medium being pumped, single flow channel, double flow channel, and three-blade impellers are available.

## Technical Parameters

Q: 8~8000m<sup>3</sup>/h  
 H: 5~62m  
 t: 0°C~40°C  
 p: ≤16bar



## WL series non-clogging vertical sewage pump

WL

## Product Overview

- > The unique design of the impeller adopts a large flow channel non-clogging hydraulic components, greatly improving the dirt passing capacity, and the fibrous substances and solid particles can effectively pass through.
- > The pump is directly driven coaxially with the motor, with compact structure and stable performance.
- > Easy operation and low maintenance costs; The whole machine can be installed outdoors without machine room required, saving a lot of capital construction costs.

## Technical Parameters

Q: 8~6000m<sup>3</sup>/h  
 H: 5~62m  
 t: 0°C~80°C  
 p: ≤16bar



## WQX series cut type submersible sewage pump

WQX

## Product Overview

- > Unique semi-open impeller structure with independent cutting system, smooth operation, good flow passage capacity, safe and non-clogging.
- > The pump is directly driven coaxially with the motor, and they are mechatronics products, with compact structure, stable performance, low noise, and more light operation.
- > The two single-end mechanical seals dedicated for submersible pumps are used for more reliable operation and longer service life of the shaft seals.
- > There are various protection devices such as oil-water probes in the motor to guarantee the safer operation of the motor.

## Technical Parameters

Q: 5~38m<sup>3</sup>/h  
 H: 6~35m  
 t: 0°C~40°C  
 p: ≤6bar



## ZW series self-priming non-clogging sewage pump

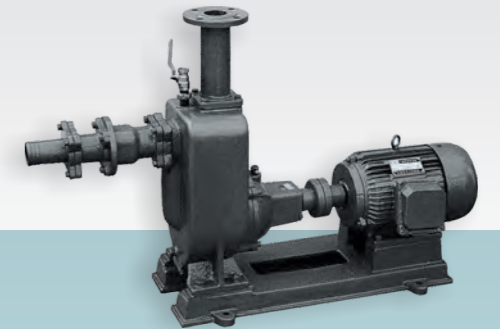
ZW

## Product Overview

- > Combined with self-priming and non-clogging drainage.
- > Simple structure, good self-priming performance.
- > High sewage discharge capacity, high efficiency and energy saving, and convenient operation and maintenance.

## Technical Parameters

Q: 8~800m<sup>3</sup>/h  
 H: 14~80m  
 t: 0°C~60°C  
 p: ≤16bar



## YW series submerged sewage pump

YW

## Product Overview

- > Uniquely designed single and double flow channel impeller and open impeller, with high efficiency and no clogging.
- > Stable, durable, and vibration-free transmission component module design. The pump body can be located below the liquid level by 0.5-5 meters.
- > The motor is not submerged without underwater cable, especially suitable for dirt resistance, corrosion resistance, and oil resistance high temperature applications.
- > A liquid level control cabinet can be equipped to automatically control the start and stop of the pump with the liquid level, without special person for supervision.

## Technical Parameters

Q: 8~2000m<sup>3</sup>/h  
 H: 7~62m  
 t: 0°C~50°C  
 p: ≤16bar



## QGL(S) series (bidirectional) submersible tubular through-flow pump

QGL(S)

## Product Overview

- > With small lift loss of water inlet and outlet, and high efficiency of pump station device.
- > Small motor power configuration, and low operation cost.
- > No water suction tank is required under the foundation of the pump, and the excavation amount is small.
- > With small diameter of pump pipe, the upper high and large workshop is not required, and no plant is built, and the truck crane is used instead of a fixed crane.
- > With excavation volume, civil engineering costs, and construction engineering costs saved, and installation area reduced; the total cost of the pump station engineering is saved by 30~40%.
- > With integral hoisting, and easy installation.

## Technical Parameters

Q: 500~38000m<sup>3</sup>/h  
H: 1.8~9m



## WTG small sewage lifting device

WTG

## Technical Parameters

- > Max. lift: 35 meters
- > Max. flow: 40 cubic meters / hour;
- > Total power: 0.75KW-15KW;
- > The water pump is a "Liancheng" cut type sewage pump, with the protection grade IPX8, submersible motor;
- > Nominal volume of pump station: 250L/400L/700L/1000L;
- > The cut type sewage pump with a cut head adopts the autocoupling installation method in the container by default (other installation methods are optional, but they can be determined through negotiation), with more convenient replacement and repair;

## Product Overview

- > Non-clogging: A unique cut head is used; the long fiber is cut off before entering the pump, preventing enging and clogging in water pump, especially suitable for media containing with long fibers or small particles, extending the service life of the water pump. The drainage pipe part can use drainage pipe with small diameter to prevent blockage, reducing the earthwork construction amount of the project, and saving space and cost.
- > No pollution: the equipment is fully enclosed to prevent the sewage from overflow, and there is a special gas exhaust pipe to discharge the gas inside the equipment to the outdoor space without peculiar smell, protecting the surrounding environment.
- > Remote monitoring (optional): According to customer needs, the equipment can be equipped with a remote monitoring system to ensure that the personnel on duty can intuitively understand the operation status of the equipment without leaving the room. There is an internal liquid level float to realize the functions of automatic start and stop of the unit and high level alarm by cooperating with the automatic control box.
- > Save floor space: There is a built-in efficient energy-saving motor featuringn with small body, high reliability, small floor space of the entire quipment, flexible installation, saved civil investment costs, and cost reduction.



## SPS intelligent integrated prefabricated pump station

SPS

## Product Overview

- > With small size of cylinder body and excellent effective volume, the product can be easily installed in any environment and narrow space. With short installation period, save most of the costs, and reduce maintenance time and effort.
- > The cylinder body is made of advanced corrosion-resistant materials such as reinforced FRP mechanical using hte winding method (GRP), with stable and reliable quality, light weight, and low cost.
- > The pump pit is designed with fluerics, and has good swimming state, no clogging and self-cleaning function. Its reasonable design greatly reduces the generation of highly toxic and malodorous gases for environmental proteciton.
- > Equipped with high-quality, high-performance submersible sewage pumps, the sensor is used to monitor the operation of the pump at all times, greatly reducing maintenance costs.
- > With high automation integration, the remote monitoring and management can be realized, and the mobile phone monitoring and remote data unlimited transmission and automatic generation of operation reports are also realized.



## Grille decontamination machine

## Product Overview

- > Arstistic shape, and compact structure.
- > Good motor sealing, and high corrosion resistance.
- > With the unique design of the anti-torsion curve of the blade, create a strong tangential water flow, avoiding entanglement and blockage.

## Technical Parameters

p: 0.85~10kw  
n: 480~980r.p.m  
t: 0°C~40°C  
h: ≤20m



## QJB submersible mixer

QJB

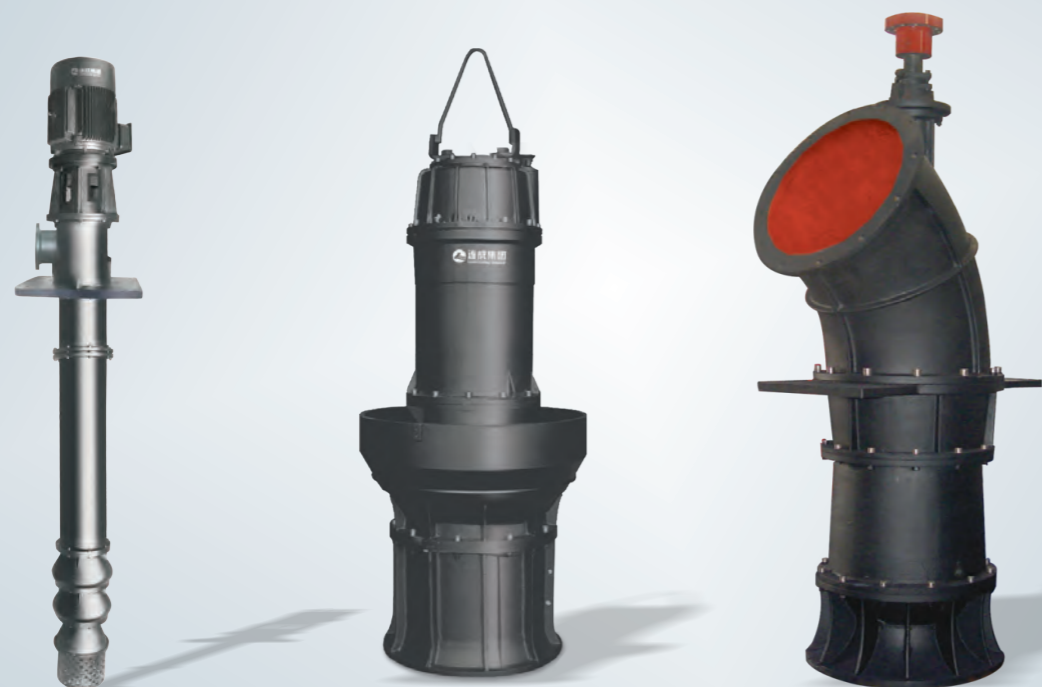
## Product Overview

- > Arstistic shape, and compact structure.
- > Good motor sealing, and high corrosion resistance.
- > With the unique design of the anti-torsion curve of the blade, create a strong tangential water flow, avoiding entanglement and blockage.

## Technical Parameters

p: 0.85~10kw  
n: 480~980r.p.m  
t: 0°C~40°C  
h: ≤20m





Municipal Water  
Conservancy, Irrigation,  
Drainage and  
Diversion of Water

> LP(T) type long shaft vertical drain pump

> QZ, QH series axial flow pump, mixed flow pump

> Z(H)LB(Q) vertical axial (mixed) flow pump

LP (T) type long shaft vertical drainage pump

LP(T)

Product Overview

- > The impeller of the pump is completely submerged in the liquid without water filling required at start-up.
- > The impeller is made of wear-resistant material, expanding the range of use of the pump.
- > The pump is equipped with an anti-reversion device effectively prevent the reverse rotation of the pump.

Technical Parameters

Q: 8~60000m<sup>3</sup>/h  
H: 3~150m  
t: 0°C~60°C  
p: ≤20bar



QZ, QH series axial flow pump, mixed flow pump

QZ, QH

Product Overview

- > Medium and low lift, and high flow.
- > Leak-proof protection and overheating protection devices reduce or prevent failures.
- > Three mechanical seals are used to protect the motor and bearings.
- > Submersible operation, low noise, long life, in line with environmental protection requirements, especially suitable for large rainwater sewage pump stations.

Technical Parameters

Q: 500~96000m<sup>3</sup>/h  
H: 4~21m  
t: 0°C~60°C  
p: ≤10bar



Z(H)LB(Q) vertical axial (mixed) flow pump

Z(H)LB(Q)

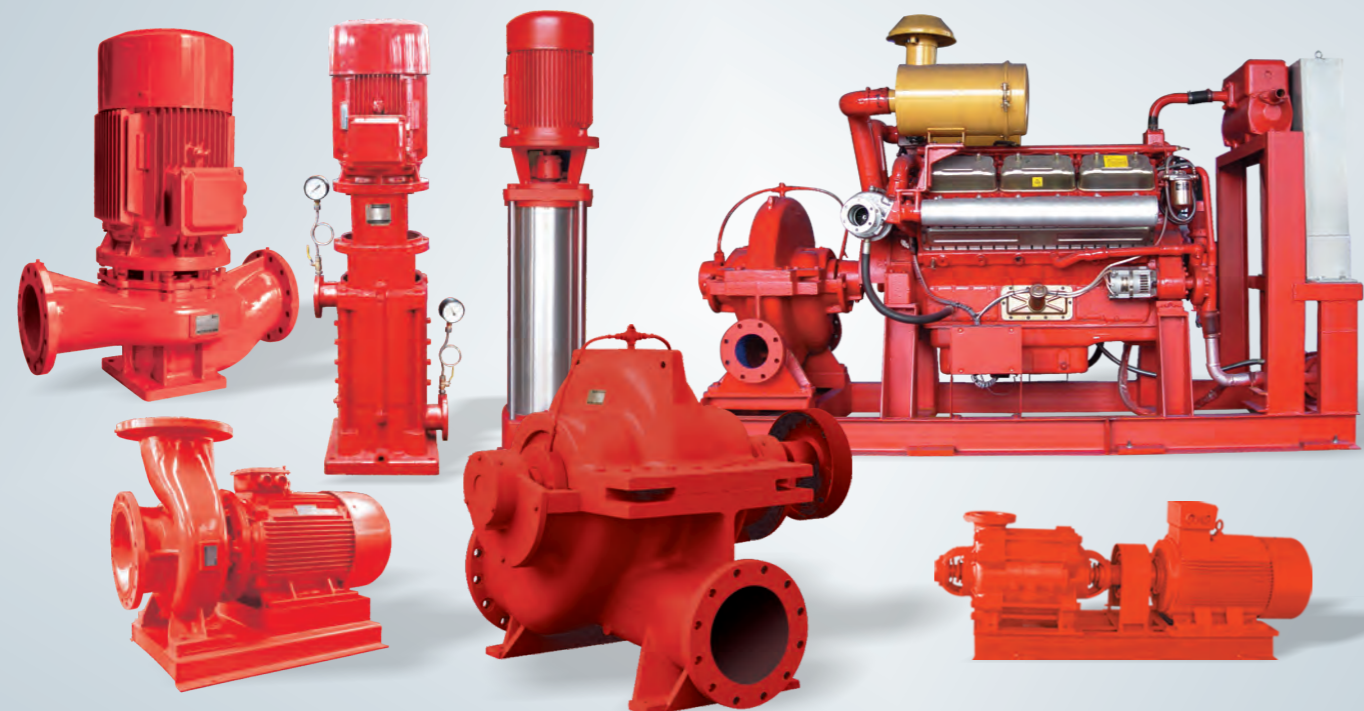
Product Overview

- > The latest excellent hydraulic model is selected, with wide efficiency range, stable performance and excellent cavitation resistance.
- > The impeller is precisely cast with wax model, and the surface is smooth and bright; the casting dimensional accuracy is consistent with the design accuracy,
- > The hydraulic friction loss and impact loss are greatly reduced; the product has good blade balance performance, and its efficiency is 3%~5% higher than that of ordinary impeller.

Technical Parameters

Q: 500~200000m<sup>3</sup>/h  
H: 1~30.6m  
t: 0°C~50°C





## Fire Pump

- > XBD-SLW (2) horizontal single-stage fire pump set
- > XBD-SLS (2) new generation vertical single-stage fire pump set
- > XBD-DV vertical multistage fire pump set
- > XBD-DW horizontal multistage fire pump set
- > XBD-GDL series vertical multistage fire pump set
- > XBD-D series horizontal multistage fire pump
- > XBD-SLOW series horizontal middle open double-priming fire pump
- > XBC series diesel engine fire pump set
- > Fire stabilized pressure water supply equipment
- > XBD/C-LP(T) series vertical long shaft fire pump

### XBD-SLW (2) new generation horizontal single-stage fire pump set

### XBD-SLW(2)

#### Product Overview

- > It is a pioneering product designed and manufactured according to the demands in line with the fire pump requirements of the international standard ISO2858 and the national standard GB8245-2006.
- > Installed in multiple ways according to the actual working conditions.
- > Components have high concentricity, and the impeller has excellent dynamic balance with small operating vibration.

#### Technical Parameters

Q: 5~180L/s  
P: 0.3~2.4bar  
t: ≤80°C  
p: ≤25bar



### XBD-SLS (2) new generation vertical single-stage fire pump set

### XBD-SLS(2)

#### Product Overview

- > It is a pioneering product designed and manufactured according to the demands in line with the fire pump requirements of the international standard ISO2858 and the national standard GB8245-2006.
- > Installed in multiple ways according to the actual working conditions.
- > Components have high concentricity, and the impeller has excellent dynamic balance with small operating vibration.

#### Technical Parameters

Q: 5~180L/s  
P: 0.3~1.5Mpa  
t: -20°C~80°C  
p: ≤16bar



### XBD-DV vertical multistage fire pump set

### XBD-DV

#### Product Overview

- > Designed according to market demand, this series of products meets the requirements of the current fire protection regulations and national standards for the scope of fire water supply conditions:
- > The number of stages of the pump can be increased and decreased according to the head used for this series of pumps;
- > With vertical installation, feature with compact structure, low noise, and small floor space.
- > Shaft seal adopts a mechanical seal, and pressure water in the balance chamber is used for lubrication and cooling;
- > The balance drum is used to balance the axial force, greatly reducing the axial load of the rolling bearings and increasing the service life of the pump set
- > Pump is directly connected to the motor via a rigid split coupling; seen from the motor end, the pump rotates counterclockwise.

#### Technical Parameters

Q: 20~60L/s  
P: 0.7~2.0Mpa  
t: ≤80°C  
p: ≤25bar



## XBD-DW horizontal multistage fire pump set

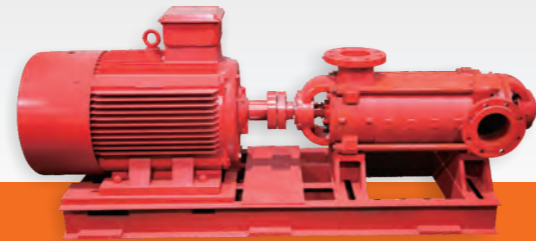
## XBD-DW

## Product Overview

- > According to the market, this series of products meets the requirements of the fire water supply conditions range specified in the current fire protection regulations and national standards for fire supply conditions;
- > For this series of pumps, the number of stages of the pump can be increased and decreased according to the needs of the head used;
- > Horizontal installation, horizontal suction, vertical discharge, and compact and reliable structure;
- > The shaft seal adopts a mechanical seal, and the pressure water in the balance chamber is used for lubrication and cooling;
- > The balance drum is used to balance the axial force, greatly reducing the axial load of the rolling bearing and improving the service life of pump set;
- > The pump is directly connected to the motor via elastic pin coupling; seen from the motor end, the pump rotates counterclockwise.

## Technical Parameters

Q: 20~60L/s  
H: 0.7~2.6Mpa  
t: ≤80°C  
p: ≤30bar



## XBD-GDL Series Vertical Multi-Stage Fire Pump Set

## XBD-GDL

## Product Overview

- > The low-noise bearing is used, and hydraulic parts having precise water conservancy characteristics are designed; The water-filled shield located at the perimeter of each segment not only reduces the flow noise, but also runs smoothly.
- > Simple installation and assembly.
- > No blockage during operation. The use of copper and gold water pilot bearing prevents the rust or seizing phenomenon.
- > Excellent mechanical seals are used to prevent leakage.

## Technical Parameters

Q: 3.6~72m<sup>3</sup>/h  
P: 0.3~1.45Mpa  
t: 0°C~80°C  
p: ≤18.5bar



## XBD-D Series Horizontal Multi-Stage Fire Pump

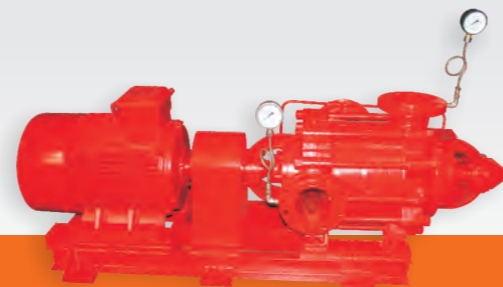
## XBD-D

## Product Overview

- > Excellent hydraulic model is used, and the product can fully comply with the current fire protection rules for reliable operation.
- > Pump sucks horizontally and drains vertically with compact and reliable structure, and the balance disc can be used to fully balance the axial force.
- > The pump has large flow range and wide high efficiency area to satisfy the needs of different operating conditions.

## Technical Parameters

Q: 5~90L/s  
P: 0.6~2.9Mpa  
t: 0°C~80°C



## XBD-SLOW Series Horizontal Split-Case Double Suction Fire Pump

## XBD-SLOW

## Product Overview

- > Compact structure, artistic shape, and good stability, with convenient installation.
- > Smooth operation; the optimized double-suction impeller is designed to reduce the axial force to the minimum, and the impeller has excellent hydraulic performance and is formed in the precision casting way; the inner surface of pump case and the impeller surface are very smooth with excellent cavitation resistance and high efficiency.

## Technical Parameters

Q: 25~470L/s  
P: 0.3~2.0Mpa  
t: -20°C~80°C  
p: ≤25bar



## XBC Series Diesel Engine Fire Pump Set

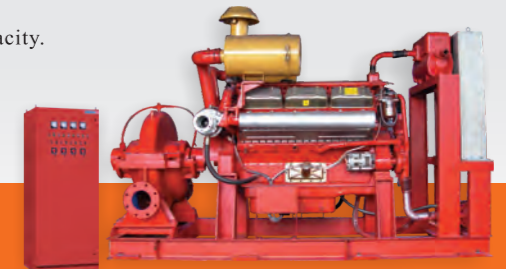
## XBC

## Product Overview

- > Diesel engine uses domestic or imported high quality product.
- > With good startup characteristics, and strong overload bearing capacity.
- > Compact structure, convenient maintenance.
- > Simple operation, and high automation.
- > Single stage pump, multi-stage pump, dual suction pump, and deep well pump can be configured according to the different needs.

## Technical Parameters

Q: 20~667L/s  
t: Normal temperature of clean water  
p: 0.3~2.5Mpa



## Fire protection pressure stabilizing water supply equipment

## Product Overview

- > Smooth operation, and reliable performance.
- > When there is a pressure loss of the fire water supply pipe network due to normal leakage, the equipment can stabilize the pressure of the pipe network.
- > Compact and reasonable structure, flexible site layout, and convenient installation and maintenance.

## Technical Parameters

Ambient temp.: 5°C~40°C  
Medium temp.: 4°C~70°C  
Regulated flow: 1~5L/s  
Working pressure: Max. 1.6MPa  
Pressure adjusting precision ≤ ±0.01MPa



## XBD/C-LP(T) series vertical long shaft fire pump

## XBD/C-LP(T)

## Product Overview

- > The impeller of the pump is completely submerged in the liquid, and no water is filled when startup.
- > The impeller is made of wear-resistant material, expanding the range of use of the pump.
- > The pump has an anti-reversal device to effectively prevent the pump from reverse rotation.

## Technical Parameters

Q: 15~20000m<sup>3</sup>/h  
H: 3~300m  
t: 0°C~60°C  
p: ≤20bar







## Complete set of water supply equipment

- > Domestic full frequency conversion water supply equipment

---

- > Microcomputer frequency conversion direct-connected water supply equipment

---

- > ZWL(V) type digital integrated full frequency conversion pipe network stacked water supply equipment

---

- > ZWL type tank pipe network stacked (no negative pressure) water supply equipment

---

- > Multi-tank type full frequency conversion stacked water supply equipment

---

- > Integrated box-type smart pump room

---

- > Smart integrated pumping station

### Domestic full frequency conversion water supply equipment

- Product Overview**
- > Compact structure and small footprint.
  - > No high water tank is required.
  - > Smooth operation, high efficiency and energy saving.
  - > With pressurized water supply.

- Technical Parameters**
- Ambient temperature: 5°C ~ 40°C  
 Medium temperature: 5°C ~ 70°C  
 Adjustable flow: 0~5000m<sup>3</sup>/h  
 Working pressure: Max. 1.6MPa  
 Pressure adjustment accuracy:  $\pm 0.01$ MPa



### Microcomputer frequency conversion direct-connected water supply equipment

- Product Overview**
- > Electrical integration design, compact structure, small footprint
  - > Stable operation and high efficiency
  - > Suitable for outdoor installation, with smart monitoring function
  - > Easy installation, and Artistic appearance

- Technical Parameters**
- Ambient temperature: 5°C~40°C  
 Medium temperature: 4°C ~ 70°C  
 Flow: 1m<sup>3</sup>~28m<sup>3</sup>  
 Head: 15~80m  
 Powe: 0.37kw~3kw  
 Pressure adjustment accuracy < 0.01MPa



### ZWL(V) Type Digital Integrated Full Frequency Conversion Pipe Network Pressure Superimposed Water Supply Equipment

ZWL(V)

- Product Overview**
- > Full frequency conversion control
  - > Water pump and frequency conversion control system have 100% standbys with high reliability.
  - > Efficiency equalization technology is used, improving the pressure control precision and machine efficiency.
  - > Inverter, pipelines and water pump are integrated, with communication technology application, and visual full-color display control.

- Technical Parameters**
- Ambient temp.: 5°C~40°C  
 Medium temp.: 4°C~70°C  
 Relative humidity:  $\leq 85\%$  (at 20 $\pm$ 5°C)  
 Power supply voltage: AC380V (+5%, -10%), 50Hz  
 Pressure range: 0~2.5MPa



### ZWL Tank Type Pipe Network Pressure Superposed (no negative pressure) Water Supply Equipment

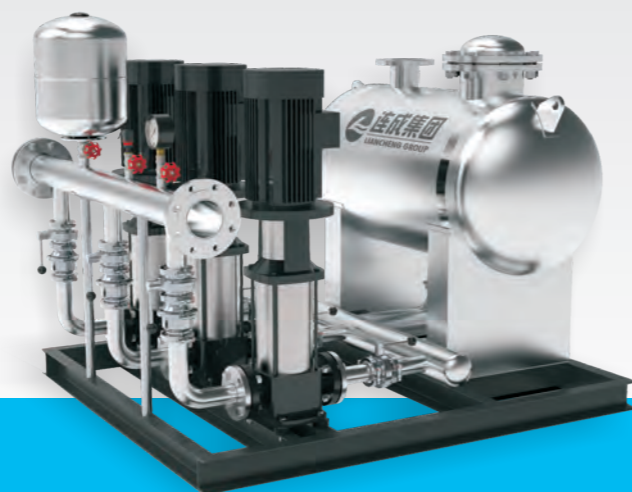
ZWL

#### Product Overview

- > The tap water pressure is used to realize the pressure superposed water supply and reduce the power of water pump to realize the reduction of energy consumption;
- > The vacuum suppressor can efficiently prevent the negative pressure from generating from the pipe network; with fully enclosed operation, no secondary pollution is caused;
- > The use of flow stabilizing tank can reduce the pressure of high water consumption at peak time to ensure strong continuity of water supply;
- > Full automatic operation without man-duty; water supply is safe and stable without pressure fluctuations in the pipe network;
- > Overpressure protection to prevent pipeline burst; all pumps are standby each other for automatic operation cycles;
- > Pumps can be increased or decreased automatically with start first and stop first

#### Technical Parameters

Ambient temp.: 5°C~40°C  
 Medium temp.: 4°C~70°C  
 Relative humidity: ≤85% (at 20±5°C)  
 Power supply voltage: AC380V (+5%, -10%), 50Hz  
 Flow range: 0-5000m<sup>3</sup>/h  
 Pressure range: 0~2.5MPa  
 Control power: ≤110KW  
 Pressure adjusting precision: ≤±0.01MPa



### Multi-tank type full frequency conversion stacked water supply equipment

#### Product Overview

- > Stacked water supply, and rational use of municipal pressure.
- > Equipped with atmospheric pressure tank, high pressure tank, ultra-high pressure tank, ultra-high pressure energy storage, multistage compensation, low flow energy consumption.
- > Fully enclosed operation, not affected by external environment, maintaining clean and hygienic water quality.
- > Flow passage parts are made of food-grade material, environmental protection and hygiene.
- > With full frequency conversion automatic control, make the pump pump runs synchronously in equal amounts for more energy-saving.

#### Technical Parameters

Ambient temperature: 5°C~40°C  
 Flow: 8m<sup>3</sup>/h~100m<sup>3</sup>/h  
 Head: 15m~100m  
 Power: 0.37kw~150kw  
 Pressure adjustment accuracy: <0.01MPa



### Integrated box-type smart pump room

#### Product Overview

- > Suitable for domestic, production, and fire water supply to meet the requirements of outdoor installation.
- > Convenient transportation, fast installation, and high integration degree.
- > Artistic appearance, firm structure, windproof and rainproof.
- > Fire and theft prevention, safety guarantee.
- > Green environmental protection, thermal and acoustic insulation, all-weather operation without disturbing the public.
- > Intelligent IoT, real-time data and historical data such as equipment operating status, electrical parameters, water quality parameters, temperature and humidity, video and images for calculation and analysis, queried on the computer or mobile phone for view.

#### Technical Parameters

Ambient temperature: -20°C~60°C  
 Medium temperature: 4°C~70°C  
 Flow: 8m<sup>3</sup>/h~200m<sup>3</sup>/h  
 Head: 15m~200m  
 Power: 0.75kw~200kw  
 Pressure adjustment accuracy: <0.01MPa



### Smart integrated pumping station

#### Product Overview

- > Suitable for domestic, production, and fire water supply to meet the requirements of outdoor installation.
- > With integrated design of water tank and pump room, fast installation and high integration degree.
- > Variable frequency water supply, tank-type stacked water supply, and box-type stacked water supply can be freely selected.
- > Artistic appearance, firm structure, windproof, rainproof and lightning protection.
- > Clean and hygienic, real-time water quality monitoring, to ensure the safety of water supply.
- > Green environmental protection, thermal and acoustic insulation, all-weather operation without disturbing the public.
- > Intelligent IoT, real-time data and historical data such as equipment operating status, electrical parameters, water quality parameters, temperature and humidity, video and images for calculation and analysis, queried on the computer or mobile phone for view.

#### Technical Parameters

Environment temperature: -20°C~60°C  
 Medium temperature: 4°C~70°C  
 Flow: 8m<sup>3</sup>/h~200m<sup>3</sup>/h  
 Head: 15m~200m  
 Power: 0.75kw~200kw  
 Pressure adjustment accuracy: <0.01MPa





## Electrical Control Cabinet

- > LEC series electrical control cabinet

---

- > LBP series frequency conversion control cabinet

---

- > High-voltage electrical control cabinet

---

- > LFB series fan frequency conversion control cabinet

---

- > Complete set of low-voltage switchgear

---

### LEC Series Electric Panels

LEC

- Product Overview**
- > Use high quality components for durable operation.
  - > With overload, short circuit, overflow, and phase loss perfect protection functions.
  - > High electrical performance, and wide application range.
  - > High quality, low price, and reliable

- Technical Parameters**
- Ambient temp.: -10°C~40°C  
 Relative humidity: 20%~90%  
 Altitud: <1000m  
 Control motor power: 0.37~315kw



### LBP Series Frequency Conversion Control Cabinet

LBP

- Product Overview**
- > Frequency conversion control, environmental protection and energy saving
  - > High quality components from well-known company such as ABB and SIEMENS are used to ensure smooth operation.
  - > Alarm, self-check, and fault judgment are available in abnormal condition.
  - > Human-machine interface can be provided according to the different needs.

- Technical Parameters**
- Ambient temp.: -10°C~40°C  
 Relative humidity: 20%~90%  
 Regulated flow: 0~5000m<sup>3</sup>/h  
 Control motor power: 0.37~315kw



### High Voltage Electric Panels

- Product Overview**
- > Simple and reliable structure, smooth startup, and convenient maintenance.
  - > With perfect alarm prompt function and motor protection function.
  - > Small size, saving infrastructure investment.
  - > High intelligence, and simple operation.

- Technical Parameters**
- Ambient temp.: 0°C~50°C  
 Relative humidity: <90%  
 Altitude: <1000m  
 Inclination of ground: <5°



**LFB Series Fan Frequency Conversion Control Cabinet**

LFB

**Product Overview**

- > High efficiency, energy saving, and stable system control.
- > Simple operation, and perfect protection functions.
- > With resonance point jump settings, allow the motor run without resonance point occurred and prevent the fan from surge.
- > With the manual switch control provided to ensure the safe and continuous operation of equipment.
- > The communication serial port can be connected to the computer to realize the direct control of computer networking.

**Technical Parameters**

Ambient temp.: 0°C~40°C  
 Relative humidity: <90%  
 Altitud: <1000m  
 Inclination of ground: <5°



**Low-Voltage Complete Set of Switchgear**

**Product Overview**

- > A computer-aided manufacturing system that integrates design, manufacturing, and analysis is used to ensure the quality of equipment.
- > Advanced automatic production equipment and standardized production line are used to ensure precision manufacturing.

**Technical Parameters**

Ambient temp.: -10°C~-40°C  
 Relative humidity: 20%~90%  
 Power supply: 380V, 50Hz



**Series Valves**

- > Gate valve
- > Butterfly valve
- > Exhaust valve
- > Pressure reducing valve
- > Filter
- > Electric valve
- > Ball valve
- > Control valve
- > Water conservancy control valve
- > Check valve
- > Sludge discharge valve

Full variety, wide application.  
 The valve body is made of highly precision cast with accurate geometric dimensions, and has good sealing to ensure leak-free operation.

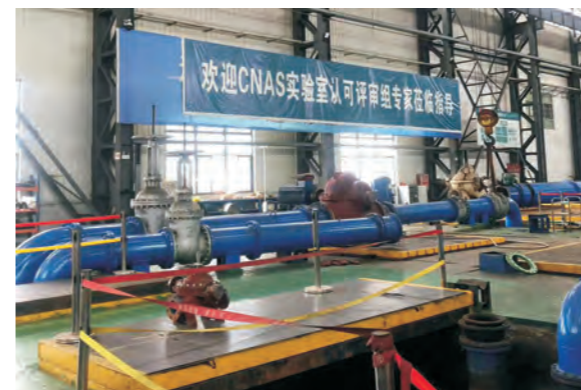


## 大连工厂化工泵



After over two decades of rapid development and market layout, the Group currently has five major industrial parks, headquartered in Shanghai and distributed in economically developed areas such as Jiangsu, Dalian, and Zhejiang, with a total area of 550,000 m<sup>2</sup>; many wholly-owned subsidiaries and holding companies, including Shanghai Liancheng Pump Manufacturing Co., Ltd., Shanghai Liancheng Motor Co., Ltd., Shanghai Liancheng Valve Co., Ltd., Shanghai Liancheng Environmental Engineering Equipment Co., Ltd., Shanghai Liancheng Group General Equipment Installation Co., Ltd., Shanghai Liancheng Group Logistics Co., Ltd., Shanghai Liancheng Group Suzhou Co., Ltd., Shanghai Liancheng (Group) Dalian Chemical Pump Manufacturing Co., Ltd., Zhejiang Jiadian Motor Co., Ltd., Shanghai Ametech Industrial Equipment Co., Ltd., with a total capital of RMB 650 million and total assets of over RMB 3 billion. In 2020, the Group achieved a sales revenue of RMB 3.3 billion, with a total tax of more than RMB 100 million paid, cumulative donation of RMB 10 million to society, and sales performance ranked top in the industry.

## 上海连成集团苏州工业园

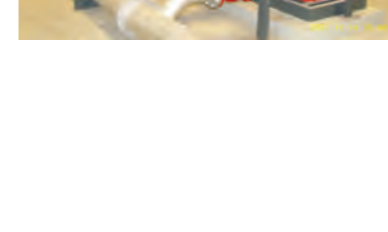
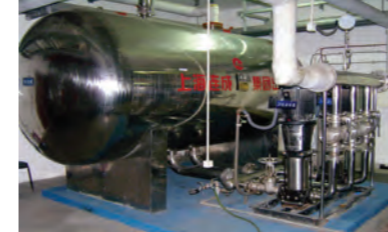


In May 2010, we settled in Taicang High tech Industrial Park, Chengxiang Town, Taicang City. The project has a total investment of 300 million yuan and covers an area of 200000 square meters. The first phase of the project is about 68000 square meters, and was completed and put into use in June 2014. In March 2015, Taicang Universal Large Test Center has been fully put into use. Currently, a large water pump testing center with an investment of 5 million yuan has a storage capacity of 15000 cubic meters and a testing capacity of 80000 cubic meters per hour. It has become the largest water pump testing platform in East China.

The most authoritative fluid integration solution in the industry. The working area of the test bench is 2500m<sup>2</sup>. The pump outlet pipe diameter that can be tested is up to 2m, the flow rate is up to 80000m<sup>3</sup>/h, the head is up to 1600m, the power is up to 5000kw, the voltage level is 10kV, 6kV, 380V, and the test platform can carry a pump unit weight of 60 tons, with a crane weight of 50 tons. The construction of this large-scale pump testing platform has put Liancheng Group's pump testing capabilities at the forefront of the world.

This test bench can test large horizontal pumps (such as double suction pumps), as well as underwater pumps (such as axial flow pumps). The test bench is built with a 10m deep and adjustable water level wet pit, which meets the testing of a thousand axial flow pumps, and a 10 meter deep dry pit, which meets the low cavitation margin testing of large pumps. The test voltage range covers low voltage 380V, high voltage 6kV, and 10kV. The test bench can conduct independent testing of two pumps at the same time, greatly improving the efficiency of testing operations.

The testing platform is constructed and configured according to the international testing standard level 1 accuracy, and each testing instrument adopts high-precision instruments to ensure the accuracy of testing. The testing platform adopts a new high-tech testing software to automatically collect testing data, achieve multiple sets of data fitting collection for the same parameter, and collect different parameters at the same moment, ensuring high accuracy and accuracy of parameter testing data. The detection of water temperature fitting and water density changes entering the testing data collection further improves testing accuracy. This testing platform meets the requirements of domestic and foreign testing standards (such as Chinese national standard GB3216, international standard TSO9906, American standard ASME/ANSI/HI 16, American Petroleum).



## Building Construction

Building construction is an important element of urban intensification, and water supply systems are an important topic in building construction.

With various types and excellent and reliable quality, the domestic and fire pumps produced by Liancheng win the praise of users in building construction systems.

Liancheng constantly has been adhering to the concept of "improving the quality of human life", and creating the optimal water supply solutions and equipment in this field.

### [A directory of some model projects]

- Capital Airport
- Shanghai Hongqiao International Airport
- Shanghai Lujiazui Garden Community
- Guangdong Jiaduoli Garden Community
- Shanghai Second Welfare Institute
- Shanghai Jiali Centre
- Shanghai Meiluocheng Mall
- Changchun Fuhao Garden Community
- Harbin Tianhe Community
- State Administration of Radio and Television
- Peking Union Medical College Hospital
- People's Daily
- Beijing Maternal and Child Health Center
- Central Radio, Film and Television Department
- Chengdu Gelin Garden Community
- Jiangxi Hotel
- Yangquan Telecom Building
- Chengdu Securities Co., Ltd.
- Shanghai Lianhua Supermarket
- Shenyang Xinhijie Garden Community
- Wenzhou Rongxing Building
- Wenzhou Prince Garden Community
- North China Electric Power Design Institute
- Shanxi Provincial Museum
- Xi'an Municipal Library
- Standing Committee of the Shijiazhuang People's Congress
- Henan Provincial Television Station
- International Grand Theatre
- Shanghai City Holiday Hotel
- Shanghai Zhengda Mall
- China Finance Museum
- Zhongnanhai, China
- Shenyang Taoyuan International Airport
- Tianjin Wanlong Pacific Building
- Shanghai Martmall
- Chengdu International Convention and Exhibition Center
- Sichuan Normal University
- Industrial and Commercial Bank of China
- People's Bank of China
- Nanjing Brain Hospital
- Wenzhou Century Building
- Wenzhou Jinding Garden Community
- Wenzhou Yongnan Commercial Building
- Qingdao University
- Harbin Engineering University
- Ningxia Forestry Research Institute
- Baoshan Radio and Television University
- Chenzhou Museum
- Shenyang Chifeng Ping Coal Investment Co., Ltd.
- Ruihai City Jiuzhou Hotel
- Chengdu Television Station
- Chengdu Third People's Hospital
- Shenyang Jinqiao Building
- Henan Television Station
- Tongji University
- Beijing Forestry University
- Longgang Yilong Yishan Hotel
- Yanbian International Convention and Exhibition Center
- Shanghai Jiao Tong University
- Beijing General Staff Land Aviation Department
- Beijing Jinhua Tongda Real Estate Development Co., Ltd.
- Beijing Gaoshenghua Real Estate Development Co., Ltd.
- Beijing Greentown. Lily Apartments
- The First Construction and Installation Engineering Corps of Beijing Air Force
- Lianyungang Yunlong Real Estate Development Co., Ltd.
- Ningxia Longhu Hotel
- Tianchang People's Hospital
- Beijing Xidan Friendship Group
- Capital Normal University
- The second construction company of the second bureau of China State Construction Bureau
- Nanchang Gao'an City Traditional Chinese Medicine
- Chengdu Wanda Commercial Plaza
- Anhui Traditional Chinese Medicine Geriatric Treatment Center
- Chinese Life Insurance Ningxia Branch
- Engineering Design Institute of Hebei Sinosteel Group
- Zhejiang Baoye Construction Group Co., Ltd.
- Anhui Xinhua University
- Gansu Overseas Engineering Corporation
- Shenyang Institute of Aeronautical Industry
- Suzhou Ruihua Hospital



## Industrial and Mining Enterprises

Liancheng provides a variety of fluid transfer pumps for many industrial enterprises. With its excellent performance, the product can meet the requirements of various industries and links.

As a supplier of many world-renowned enterprises such as Siemens, ABB, Coca-Cola, and Bayer, Liancheng is constantly striving for innovation and research to provide efficient and stable fluid transfer pumps!

### [A directory of some model projects]

Shougang Group

Jinshan Petrochemical General Plant

Roche Pharmaceutical Group

Leiyunshang Pharmaceutical Co., Ltd.

North China Pharmaceutical Group

Chengdu Diao Pharmaceutical Group

Yili Milk Industry

Wuhan Iron and Steel Group

Pangang Group

Daqing Heating Company

JVC Nippon Electronics Co., Ltd.

Changan Automobile Group

Tangshan Power Plant

Daqing Oilfield

Jiamusi Power Plant

Bayer Pharma

Qingdao Haier

PetroChina Company Limited

Qinshan Third Nuclear Power Co., Ltd.

Siemens Numerical Control

China FAW Group Corporation

Shengli Oil Field

Qilu Pharmaceutical

Shandong Dong'e Ejiao Group Co., Ltd.

China Petroleum & Chemical Corporation

ABB Transformers Co., Ltd.

Taiji Group

TCL Ace Appliances

Sinopec Group

Fushun Petrochemical Co., Ltd.

Shenyang Angang Group

Shenyang Benxi Iron & Steel (Group)

Zhengzhou Longshengxiang Mining & Metallurgical Co., Ltd.

Guizhou Kailin (Group) Mining Corporation

Shanxi Coking Co., Ltd.

Shandong Yankuang International Coking Co., Ltd.

Shijiazhuang Coking Group Co., Ltd.

Zhongtian Coking Plant located at the suburb of Changzhi City

Daqing Petrochemical General Plant

Shandong Hualu Hengsheng Group

Wuhan Tianhe Airport

Shandong Tianfu Group

Hebei Guohua Dingzhou Power Plant

Shandong Weifang Power Plant

Handan Mining Group

China General Machinery Engineering Corporation

Handan Fengfeng Mining Area Pengnan Coking Co., Ltd.

Shanxi Luan Huanneng Coal Coke Chemical Co., Ltd.

Shenyang Shengda Thermal Heating Co., Ltd.

Zhengzhou Heat Power Corporation

Chengde Thermal Group Co., Ltd.

Harbin Heating Company

Shenyang Shengda Thermal Heating Co., Ltd.

Huludao Bincheng Heating Management Co., Ltd.



## Industrial and Mining Enterprises

Liancheng provides a variety of fluid transfer pumps for many industrial enterprises. With its excellent performance, the product can meet the requirements of various industries and links.

As a supplier of many world-renowned enterprises such as Siemens, ABB, Coca-Cola, and Bayer, Liancheng is constantly striving for innovation and research to provide efficient and stable fluid transfer pumps!

### [A directory of some model projects]

Ningxia Datang International Dam Power Plant

Nanjing Jinpu Jinhua Chemical Co., Ltd.

Jinan Huaneng International Power

China Chemical Engineering Corporation

Shanxi Hongda Iron and Steel Group Co., Ltd.

Nanchang Xinyu Iron and Steel Co., Ltd.

Shanghai Electric Group

Hebei Zhongrun Pharmaceutical Co., Ltd.

Jilin Guangming Heating Co., Ltd.

Dalian Shuguang Public Utilities Office Heating Company

Jiantao (Hebei) Chemical Co., Ltd.

Yunnan Furui Chemical Co., Ltd.

Guangzhou CNOOC Petroleum Refining & Chemical Co., Ltd.

Shaanxi Huadian Pucheng Power Generation Co., Ltd.

Zhuhai Baota Petrochemical Co., Ltd.

Jinzhou petrochemical

Guangzhou Sinopec Geli Gaolang Port Petrochemical

Harbin Material and Equipment Corporation

Xinjiang Bayi Iron and Steel

Dalian Schneider Chemical Pump Co., Ltd.

Harbin Jiancheng Group

Changzhou East China Glass Fiber New Materials Co., Ltd.

Beijing Olympic Park

Shenyang Chifeng Jinfeng Copper Industry Co., Ltd.

Taiyuan Tianji Sinochem Gaoping Chemical Co., Ltd.

China Metallurgical and Mining Corporation



## Municipal Water Conservancy

Liancheng always follows the harmonious relationship between human beings and nature

In China, large-scale water supply and drainage devices used in many water conservancy project such as the Yellow River Xiaolangdi Project and the Ningxia Yanghuang Irrigation Project are provided by Liancheng. In addition, it can be found that water supply and drainage devices provided by Liancheng is working efficiently and safely in urban rain (sewage) pumping stations, waterworks, and sewage treatment plants.

### [A directory of some model projects]

Ningxia Yanghuang Irrigation Project  
 Shanghai Rainwater Pump Station  
 Beijing Luhuan Sewage Treatment Station  
 Changanli sewage treatment plant  
 Changhai sewage treatment plant  
 Chaoyang Yanwang Bizi Water Reservoir  
 Dalang Water Supply Company  
 Dalian Sewage Treatment Plant  
 Dezhou Zhangwei South Canal Sewage Drainage Project  
 Dongguan Dalang Water Supply Company  
 Dongguan De sewage treatment equipment plant  
 Dongbang Water Conservancy Station  
 Fengnan Liyuan Sewage Treatment Co., Ltd.  
 Fushun City Waterworks  
 Gao'an City Water Supply Company  
 Kunming Cailian River Rainwater Pump Station  
 Yantai Development Zone Water Supply Company  
 Jiangxi Dexing Water Authority  
 Jiangxi Yingtan Hydropower Station  
 Jiuxi Sewage Pump Station  
 Lianyungang City Sewage Treatment Plant  
 Minhou County Water Supply Company  
 Mudanjiang Sewage Treatment Engineering Headquarters  
 South China Water Supply and Drainage Company  
 Qiqihar City Beifang Water Treatment Plant



## Other Industries

The Liancheng water pump is also widely used in other industries such as agriculture, medicines, environmental protection, and foods.

With its professional design concept, advanced manufacturing technology and strict quality control standards, Liancheng water pump has won wide praise in various industries.

### [A directory of some model projects]

Agricultural Irrigation Projects in Angola  
 Bayer Pharma  
 Sichuan Taiji Pharmaceutical Co., Ltd.  
 Pepsi Cola Beverage Limited  
 Roche Vitamins Pharmaceuticals Limited  
 Harbin Pharmaceutical Co., Ltd.  
 Shanghai Guanshengyuan Food Co., Ltd.  
 Nanjing Yurun Meat Food Co., Ltd.  
 Zhangjiagang Tongqing food  
 Anhui Furun Meat Processing Co., Ltd.  
 Nanjing Xiaochuniang Fast Food Company  
 Fogang Gourmet Powder Factory  
 Hangzhou Meat Products Co., Ltd.  
 Shanghai Chumao Shengang Food Factory  
 Guigang Yangxiang Beverage Factory  
 Coca-Cola Beverage Limited  
 Unity Enterprise Food Co., Ltd.  
 Suzhou Weifeng Food Co., Ltd.  
 Jialong Food Company  
 Guigang Yangxiang Beverage Factory  
 Qingdao Fusheng Food Co., Ltd.  
 Penglai Huize Food Co., Ltd.  
 Shandong Zhihe Food Co., Ltd.  
 Qingdao Duofukang Food Co., Ltd.  
 Boxing Huakang Food Co., Ltd.  
 Fujian Longhe Food Industry Co., Ltd.  
 Hangzhou Jinyi Food Co., Ltd.  
 Qinhuangdao Jinhai Food Industry Co., Ltd.  
 Xuzhou Weiwei Food and Beverage Co., Ltd.  
 Shanghai Third Traditional Chinese Medicine Pharmaceutical Factory